

PIPING CONNECTIONS FOR ELECTRIC FIRE PUMP CONTROLLERS

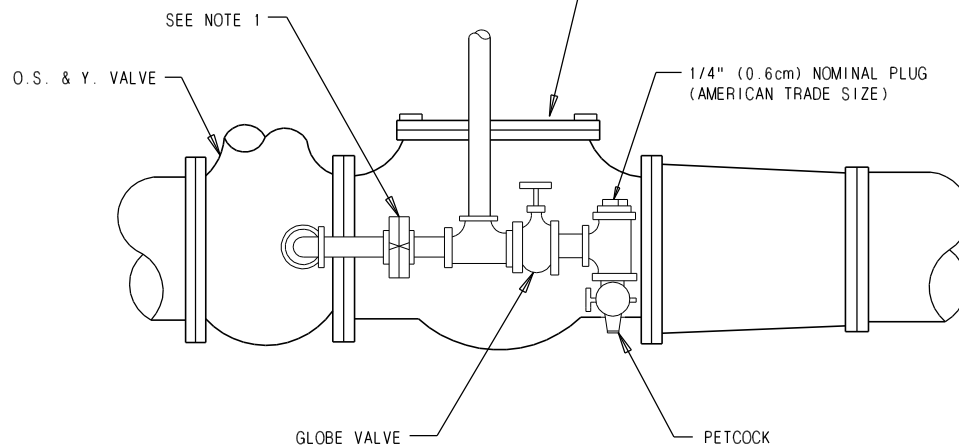
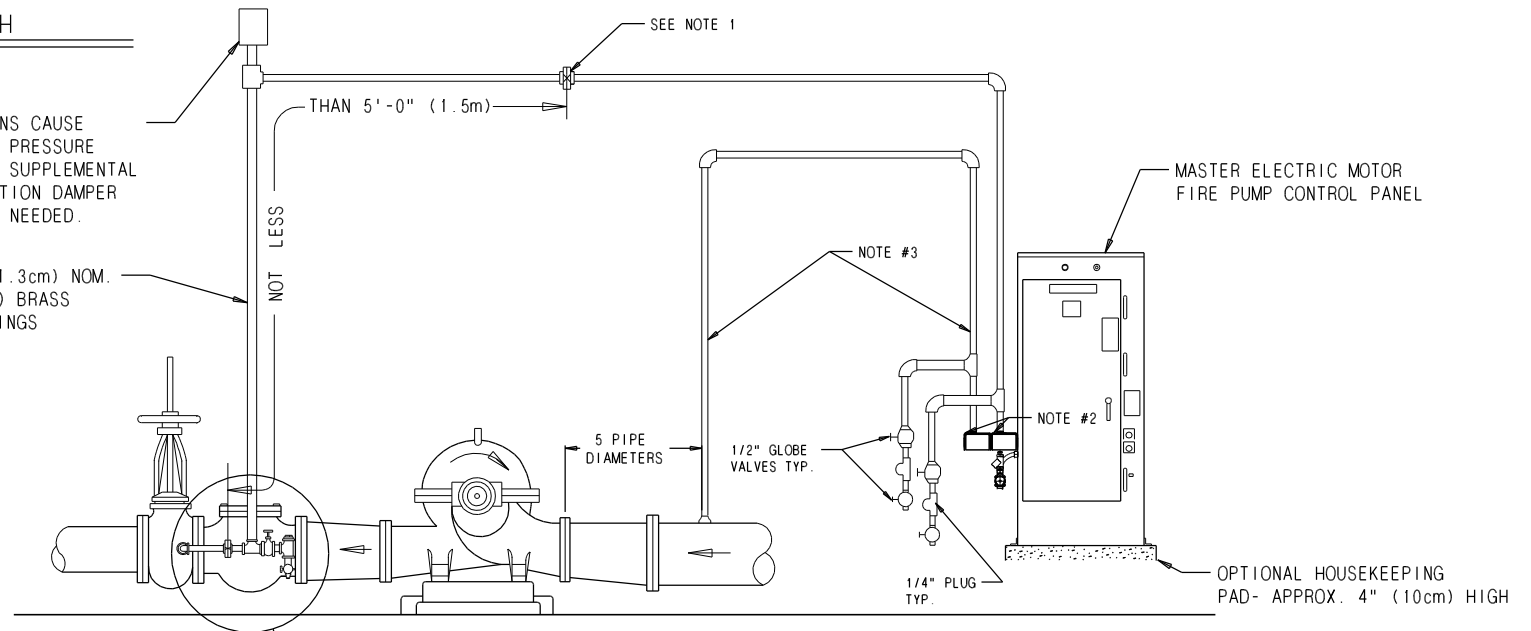
MASTER

PIPING CONNECTION FOR AUTOMATIC PRESSURE SWITCH

(PER NFPA 20 FIG. A.4.32(a))

WHERE WATER PULSATIONS CAUSE
ERRATIC OPERATION OF PRESSURE
SWITCH OR RECORDER A SUPPLEMENTAL
AIR CHAMBER OR PULSATION DAMPER
(ACCUMULATOR) MAY BE NEEDED.

NOT LESS THAN 1/2" (1.3cm) NOM.
(AMERICAN TRADE SIZE) BRASS
PIPE WITH BRASS FITTINGS
OR EQUIVALENT.



NOTE

1. BRONZE CHECK VALVES, CLAPPER DRILLED WITH 3/32" (.24 mm) HOLE. EXCEPT WHERE WATER IS CLEAN GROUND FACE UNIONS WITH NON-CORROSIVE DIAPHRAM & 3/32" (.24 mm) ORIFICE MAY BE USED.
2. 1/2" (1.3cm) NOMINAL AMERICAN STANDARD TAPER FEMALE PIPE THREAD INLET & OUTLET.
3. ADDITIONAL PLUMBING REQUIRED IF MOD. 83LT PROVIDED



Master Control Systems Inc.
LAKE BLUFF, ILLINOIS U.S.A.

Piping Connections for Electric Controllers w/ 83LT

Date 10 September 2021

Drawing 20400 Issue 4